

ORACLE®

Mitchell McGovern

Vice President

Global Information Technologies

Oracle Corporation

Austin Data Center

Austin Data Center Overview

- State-of-the-art Data Center
 - Raised Floor Capacity >82,000 SF
- Primary Data Center Serves:
 - Outsourcing Customers
 - Internal Production
 - New Development Systems
- Fully Redundant Infrastructure
 - UPS, Generators
 - Telecommunications Network
- Comprehensive Security Systems
- Network Overview

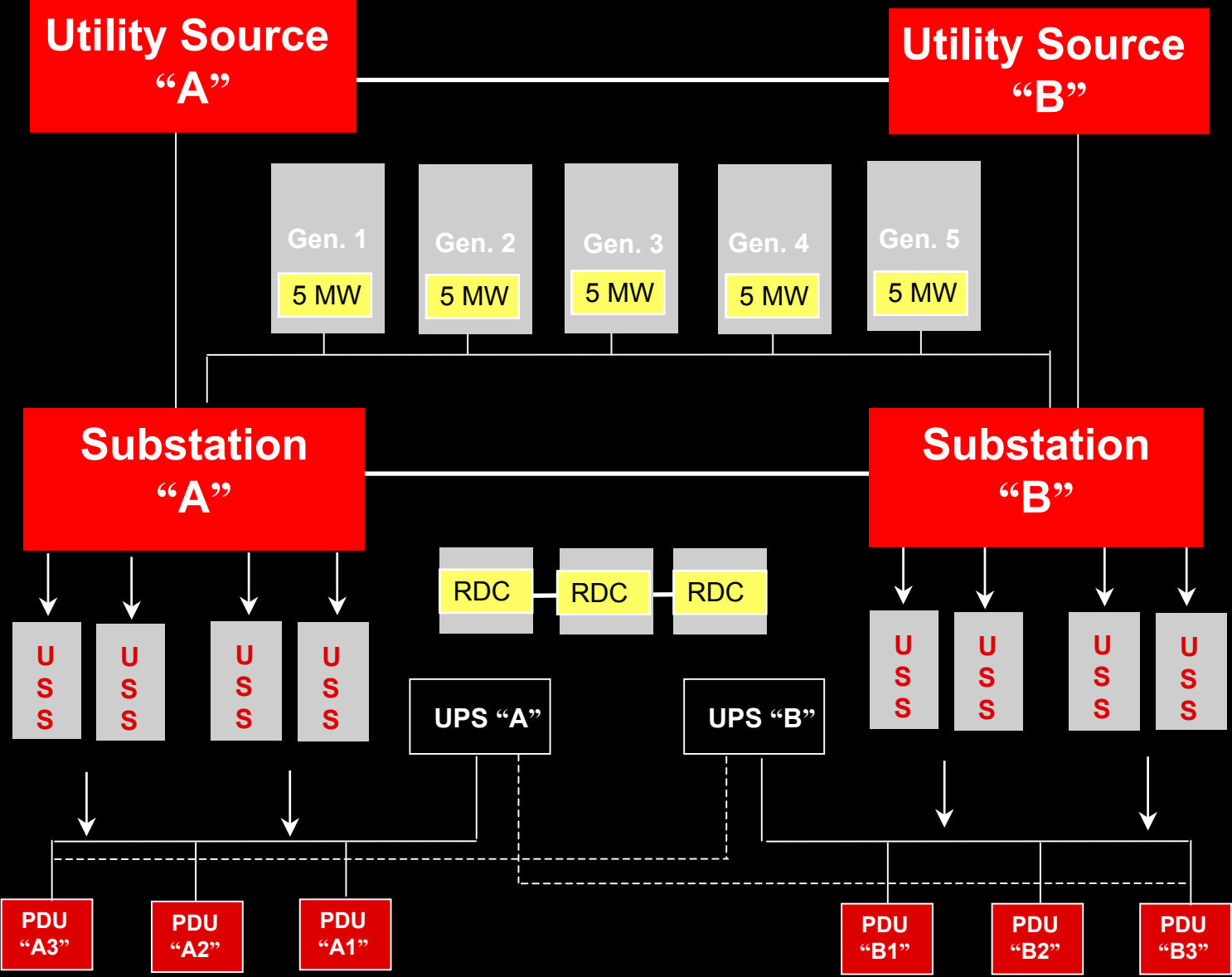
Austin Data Center Physical Plant



*Oracle's Premier
Global Data Center*

- 42,000 SF raised floor, expandable to 82,000 SF
 - 1140 19-inch racks
- Primary Power Supply
 - Dual power feeds: one active, one standby
- Uninterruptible Power Supply
 - Fully redundant, 4.8 MW
- Backup Diesel Generators
 - Five 2 MW, expandable to Seven
- Fuel Storage: 80,000 Gallons
- Water Storage: 50,000 Gallons
- 90 Watts/SF to Raised floor
- Four 600-ton chillers expandable to Six

Austin Data Center Power Diagram



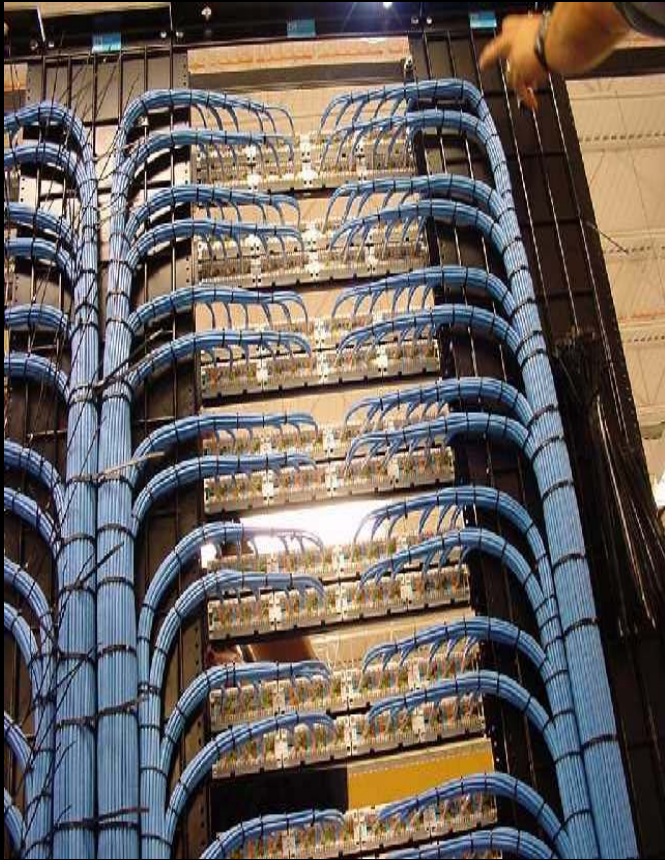
Physical Security



Overview

- 24x7 Armed Security Guards
- Biometrics
- cctv System for automatic camera call up: interior & exterior
- Digital video recording systems
- Global anti-passback (in/out) card readers
- Single Point of Access via Mantrap
 - Weight and dual biometric verification system
- Building perimeter:
 - Protected with Electronic Intrusion Detection Systems
 - Glass protected by “BlastGard” window film
- Employee Background Checks
- Guard Gate
- X-Ray, Metal Detectors
- Second-level Biometrics

Network Overview

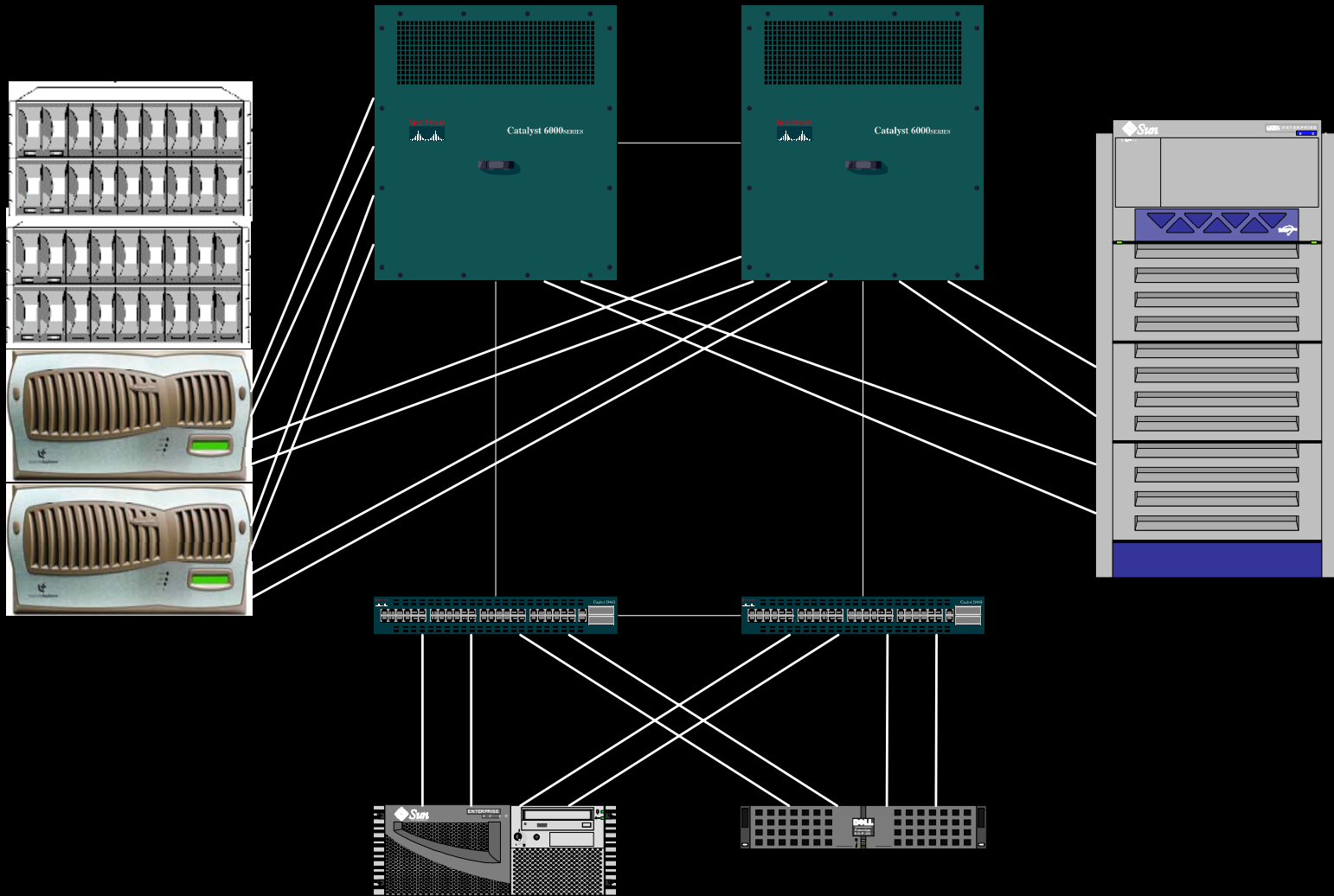


- Increased bandwidth to meet demand
- Increased network resilience through:
 - Carrier and route diversity
 - Hardware redundancy
 - Dual links for network hubs
- Decreased network latency
- Provide network capacity to disaster recovery site
- Diverse Fiber Entrance Paths
- CAT5 Copper Cable- 576 Miles
- Fiber Cable- 150 Miles
- GigE Ports- 8352
- Copper Ports- 5568

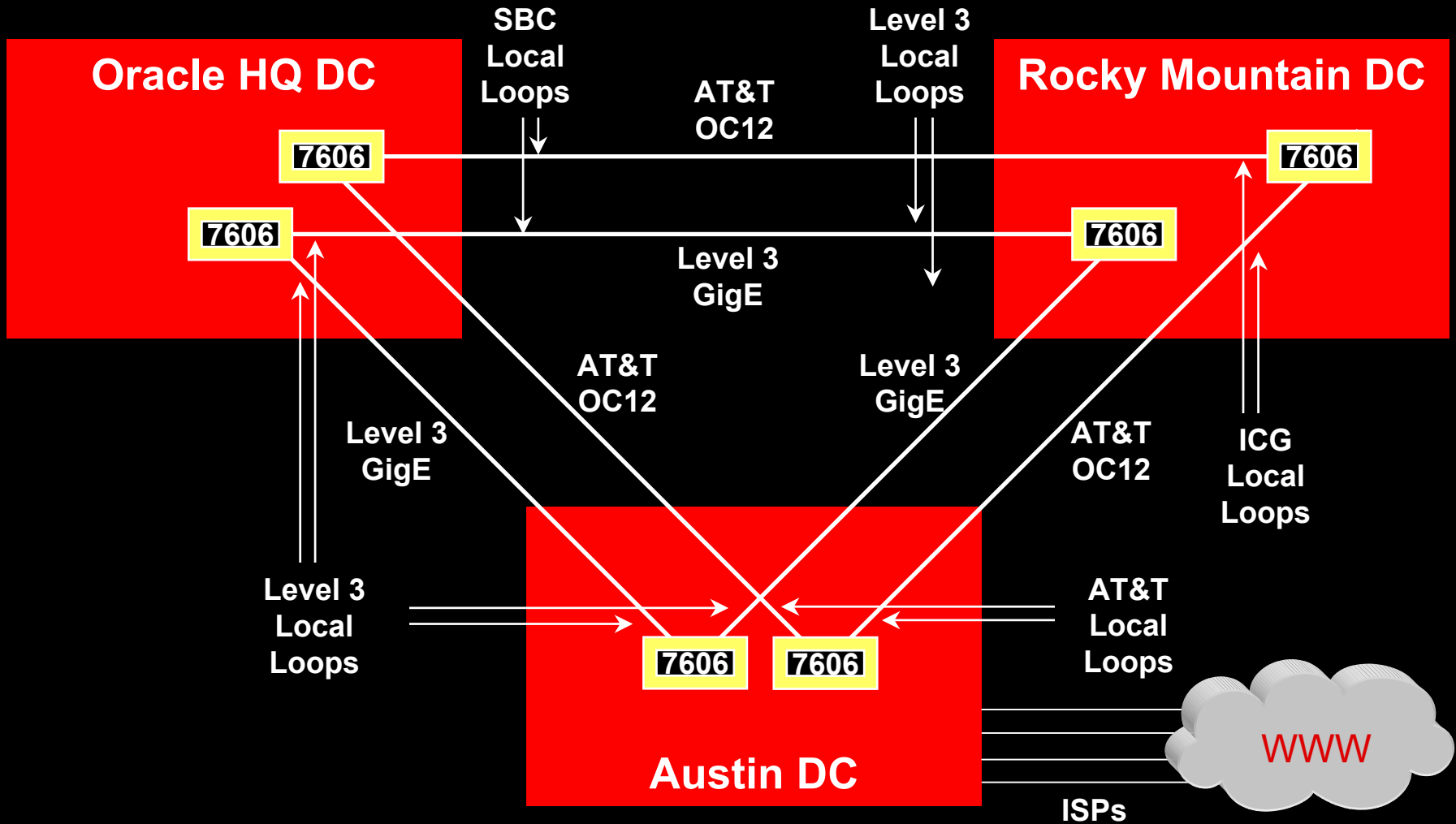
Network Component Resilience

- Hardware
 - Carrier-Specific Router
 - Duplicate Hardware
 - Transit Router/Switch
 - Firewall
 - Load Balancers
 - Distribution Switch
 - Access Layer Switch
- Uplinks
 - Multiple uplinks per component
 - Components connect to different equipment
- Carriers
 - Multiple Carriers
 - Multiple and Diverse Points of Entry

Component Resilience



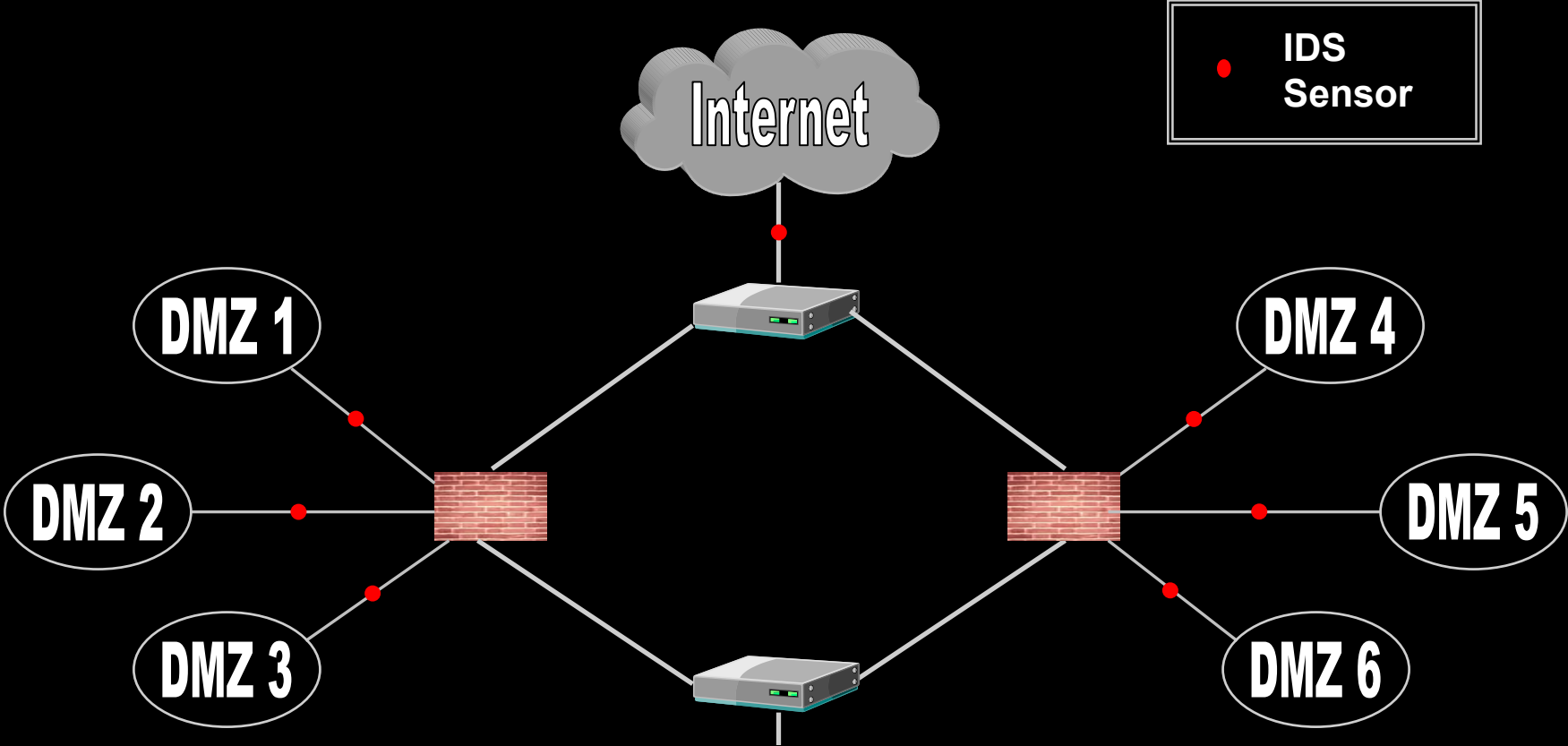
Core WAN among Data Centers



Network Security Components

- Layer 1(Physical)
 - Dedicated Equipment for Hosting Environment
 - Dedicated Wiring Infrastructure
- Layer 2 (Data Link)
 - Virtual Local Area Network (VLAN)
 - Management Network
- Layer 3 and higher (Network)
 - Isolated IP Subnet per Customer
 - Protocol Access controlled at the Firewall Level
- Intrusion Detection System
 - Network Based
 - Separate from Firewall
 - Monitors Customer, Oracle, and Internet traffic

Network Security: Defense in Depth



ORACLE®

A large, stylized graphic featuring a light gray 'Q' and a light gray 'A' in the background. A red ampersand (&) is superimposed over the center, overlapping the 'Q' and 'A'.

QUESTIONS
&
ANSWERS